



*Maile Lei -*

*(Slightly earthy fragrance)*

*Probably the oldest and most popular. During the ruling monarchy, this lei was once only worn by royalty. Also associated with worship, particularly the gods of the hula, it was sacred to Laka and was offered at her altar with other native plants. It was also used as a peace offering on the battlefield.*



*Cigar Lei -*

*(No fragrance)*

*Many hundreds of blossoms are used to create this long-lasting lei. Resembling that of a burning cigar, the tube-like flowers of the Cuphea ignea shrub are a fiery reddish orange (some are available in lavender) with a white tip, like a burning cigar. This lei is a marvel of a lei sewer's hard work.*



*Ti Leaf -*

*(No fragrance)*

*Traditionally thought to ward away evil spirits, the Kahuna, the healing priest, wore this lei as a symbol of high rank, power, strength and courage. Warriors would toss a ti leaf into the river to predict if it was safe to cross. If the leaf sank, there was danger ahead; if it stayed afloat, it was safe to proceed. Today the modern method is to place a ti leaf in your suitcase to assure your luggage isn't lost. Many continue to believe in the sacredness of the ti using it for costuming and rituals. Also, the roots to the plant were used to make candy and beer. Today a popular dish called laulau calls for ti leaves.*



*Ilima Sida Fallax (Kaneohe Gold) -*

*(No fragrance)*

*In remembrance of Laka, dancers familiar with the halau (school) hula offer these golden orange leis. Once reserved in historical times for High Chiefs (Kahunas) only, these slightly ruffled, tissue paper-like blossoms are a great choice for rich vibrant color. Picture depicts double sewn ilima.*



*Koa Seed Lei*



*Yellow Mung Shell Lei*



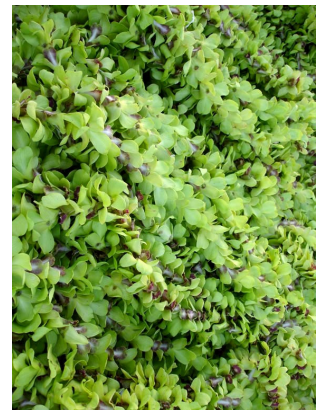
*Kukui Nut – (No fragrance)*

*In ancient times, the Kukui nut was reserved for the Ali'i, the reigning chiefs of Hawaii. The tree, which bears the nuts was named the official state tree, due to its many values. The kernel is used to make oils, shampoos, and was once fuel for torches and a source for a spice called "Inamona". Kukui shells made dark-colored dyes for the kapa and Tapa fabrics. This lei makes a great souvenir since it will last indefinitely.*



*Hawaiian Clover –  
(No fragrance)*

*This colorful lei consists of paper-like flowers from the amaranth plant (clover) becoming a dainty long-lasting lei that may be dried to cherish for years.*



*Orchid Lei –  
(Little to no fragrance)*

*Due to the ability to stay looking fresh long after sewing, these delicate looking flowers are a great choice when shipping to the mainland. Available in an array of hues from fuchsia with creamy ivory centers to vibrant green with pink middles. This lei is also available in plain white or solid purple. The photo on the left depicts a Sonja orchid, which has purple petals with a white center.*



*Double Hono Hono orchid lei –  
(No fragrance)*

*This lei is also available in plain white or solid purple. The photo depicts a double white dendrobium orchid lei.*



*Christina style orchid lei –  
(No fragrance)*

*Truly stunning artisanship! Strung with only the lip of approximately 600 orchids, this lei is one of the most exquisite to be seen and worn.*



*Puakalanunu Crown Flower -  
(No fragrance)*

*Feel like royalty when wearing these floral crowns. Composed of five downward pointing, twisted petals that mimic a miniature royal crown made this lei a favorite of Queen Liliuokalani. In addition, the flowers attract the monarch butterfly and tie in well with butterfly releases. Legend holds that "Kama the god of love shoots arrows of the crown flower buds into the heart."*



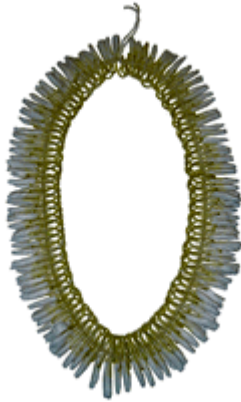
*Tuberose -  
(Highly fragrant)*

*Unlike most flowers that lose their scent after they are picked, the tuberoses' heady floral scent continues to produce, filling the air with a jasmine-like aroma making this lei one of the most popular choices.*



*Tuberose and Thailand Orchid -  
(Fragrant)*

*Combination of tuberose strung with beautiful orchids. May also substitute any other type of orchid.*



*Micronesian style ginger lei -  
(Heavenly fragrance)*

*This flower is braided to lie flat around ones' neck making it comfortable and stunning to wear.*



*Home of Kailua-Kona's only Bayside Wedding Center & Chapel.  
Contact us today for your dream wedding at Keauhou Bay!*

*808-930-4900*

*Ask for our Director of Special Occasions*

*78-128 Ehukai Street Kailua-Kona, Hawaii 96740 [www.sheratonkeauhou.com](http://www.sheratonkeauhou.com) or  
[www.starwoodhotels.com/hawaii](http://www.starwoodhotels.com/hawaii)*